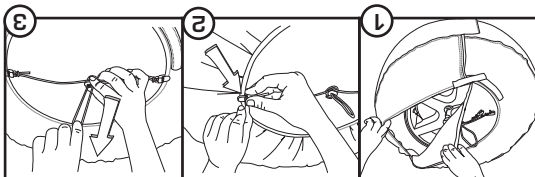


- 1a. Put Tire Tote on wheel
1. Insert Wheel Felt between tire & Tire Tote.
2. Clip bungee to outside edge of Tire Tote.
3. Hold cord lock & pull bungee to reduce slack.

**Direction:**



**Tire Tote®**  
**WHEEL FELTS**



For use with  
Tire Totes

Includes Two  
Wheel Felts

**Tire Tote®**  
**WHEEL FELTS**

**PROTECT YOUR WHEELS  
FROM NICKS & SCRATCHES!**



Patent Pending

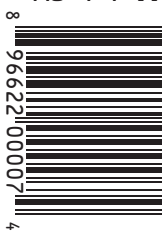
- Protects rims from nicks & scratches
- Additional level of protection from tire & brake residue
- Two durable 1/2" thick felt pads
- Easy to install
- Large ventilation hole
- One size fits all Tire Tote bags



**kurgo**

www.kurgo.com :: 877-847-3868

Made in China  
Copyright 2005  
Motivation Design  
All rights reserved



Part #00007

4