




# TPM QUICKSET USER MANUAL



**NEW SMART TPMS RESET DIY TOOL  
RESET YOUR TPMS FROM HOME**

# TABLE OF CONTENTS

1. LEGAL NOTICE .....	3
2. INTRODUCTION .....	4
3. MAIN FEATURES .....	5
4. COMPANY PROFILE .....	6
5. KIT COMPONENTS AND PC SYSTEM REQUIREMENTS.....	7
6. QUICK START .....	8
7. SOFTWARE INSTALLATION .....	9
8. MAIN FUNCTIONS .....	10
9. SOFTWARE UPDATE.....	12
10. RETRIEVE SENSOR INFORMATION FROM ECU.....	14
10.1 SELECT A CAR.....	14
10.2 ATTACH QUICKSET DEVICE TO OBDII PORT .....	15
10.3 REVIEW AND SAVE SENSOR ID RETRIEVED FROM ECU .....	16
11. ENTER AND SAVE NEW SENSOR ID INFORMATION .....	17
12. LOAD OLD CONFIGURATION AND RESET  .....	20
13. TRACK SENSOR INFO WHEN ROTATING TIRES  .....	21
14. TROUBLESHOOTING.....	22
15. CUSTOMER /AFTER SALES SERVICE.....	23
16.  WARNINGS .....	24
17. COMPANY CERTIFICATION .....	25



## 1. LEGAL NOTICE

---

### ⇒ COPYRIGHT

No part of this manual may be reproduced, stored in a retrieval system or transmitted, in any form or by any means, electronic, mechanical, photocopying, recording, or otherwise, without the prior written permission of ATEQ Corp.

### ⇒ DISCLAIMER

All information, illustrations, and specifications contained in this technical instruction manual are based on the latest information available at the time of publication.

The right is reserved to make changes at any time without an obligation to notify any person or organization of such revisions or changes.

Further, ATEQ shall not be liable for errors contained herein or for incidental or consequential damages in connection with the furnishing, performance or use of this material.



## 2. INTRODUCTION

---

Congratulations on your purchase of ATEQ TPM QuickSet. This is a valuable tool to help you to reset the Tire Pressure Monitoring System (TPMS) when replacing sensors, rotating tire sets as well as swapping tire sets on your vehicle thru OBDII connection.

PC based software provides easy and step-to-step instructions for you to reset the TPMS without having an expensive “professional” perform the same function.

### **!! Note:**

**TPM QuickSet resets the TPMS warning light on your dashboard when the following conditions are met:**

- Vehicle must be equipped with Direct Tire Pressure Monitoring System (Direct TPMS)
- **CORRECT** TPM sensors **MUST** be installed in all 4 or 5 tires
- The TPM sensors in the tires are working properly
- The TPMS ECU must be working properly
- All 4 or 5 tires are properly inflated according to the specified placard value
- Correct TPMS sensor ID numbers are entered into the TPM QuickSet software before recording them to the vehicle ECU through the OBDII connector

---

If you have any questions or concerns with regards to conditions specified, please contact your dealer or sensor supplier to obtain the proper information, or email to [tpms@atequsa.com](mailto:tpms@atequsa.com) for further assistance.



### 3. MAIN FEATURES

---

ATEQ TPM QUICKSET IS THE NEW DO-IT-YOURSELF TOOL THAT ALLOWS CAR OWNERS TO REPROGRAM TIRE PRESSURE MONITORING SYSTEM WITH THE FOLLOWING FEATURES:

FEATURES	DESCRIPTION
Compatible with future applications.	Upgrade thru internet
Retrieve TPM sensor ID stored in ECU	Keep record for future maintenance
ECU reprogramming extension cable	Convenient for hard-to-find OBDII location
Easy, Step-By-Step instructions	No manual is required during operation
SWAP TIRE function	Record sensor location after rotating tires
LOAD OLD SET	Pull out previous saved information when swapping tire set



#### 4. COMPANY PROFILE

---

ATEQ is the first company in the world serving the full range of TPMS instruments from assembly lines to individual car owners.

With its experience being a supplier to OE automobile industry, repair stations and OE sensor manufacturers, it is our promise to provide our customers the best service when it turns to Tire Pressure Monitoring System.

For more information, please visit our website  
[www.ateq.com](http://www.ateq.com) [www.ateq-tpmsreset.com](http://www.ateq-tpmsreset.com)  
Or contact us by email to: [tpms@atequsa.com](mailto:tpms@atequsa.com)

## 5. KIT COMPONENTS AND PC SYSTEM REQUIREMENTS

---



Installation CD



TPM QuickSet  
device



USB cable  
OBD extension

Recommended system configuration for installing and running TPM QuickSet on a PC:

- ⇒ Operation System: Windows XP, Windows Vista and Windows 7. No Mac compatible.
- ⇒ Processor: Pentium  $\geq$  333 MHz or faster.
- ⇒ RAM: 512 MB or above.
- ⇒ Hard disk space:  $\geq$  30 MB.
- ⇒ USB port: USB 2.0 is required.

## 6. QUICK START

---

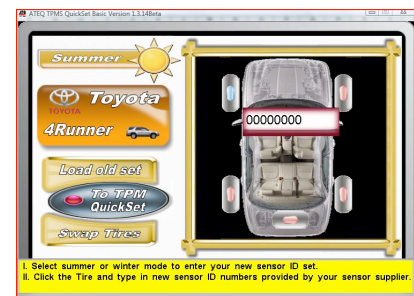
1. Install TPM QuickSet Software and USB Driver provided with the kit.



2. Follow step-to-step instructions to select your vehicle then retrieve sensor ID numbers from car ECU.



3. Select “Summer” and /or “Winter” mode and enter new tire pressure sensor IDs.

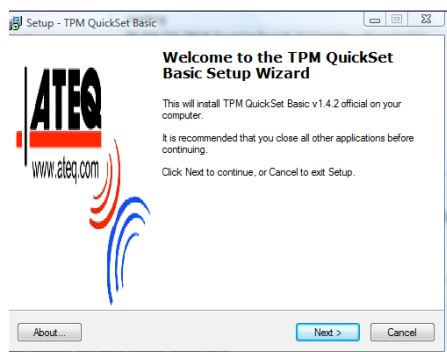


4. Attach TPM QuickSet to the OBDII connector on your car, turn ignition to “ON” position with engine off. Press the “snowflake” or “sunny” button on the device to reprogram new sensor IDs to the ECU.

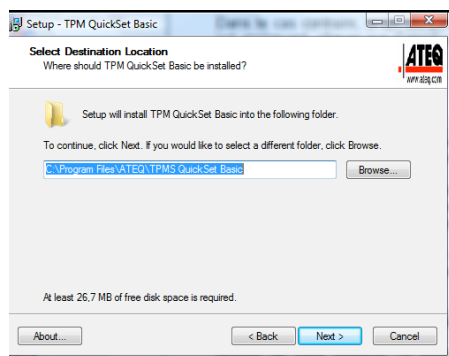


## 7. SOFTWARE INSTALLATION

---



QuickSet device must be connected onto PC thru USB cable provided with the kit before launching the installation program. If not, or if any component is missing, click on Cancel to stop the installation.



The default installation folder is chose by your system. You can choose the installation folder by clicking on Browse button.

To install the software a minimum of 30MB of free disk space is required. Check the memory of your computer before the setup.



The USB installer will be launched after copying the program files to your system. If your TPM QuickSet is not recognized by your system, cancel the installation and re-launch the installer.

If your TPM QuickSet device is still not recognized by your system, please contact [tpms@atequsa.com](mailto:tpms@atequsa.com) for further assistance.

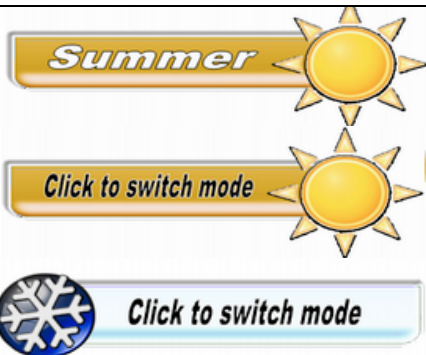
## 8. MAIN FUNCTIONS

---



The bracket “Select a car” allows you to select the vehicle brand, model and year of your vehicle. Follow the on-screen step-to-step instructions to select vehicle(s) you wish to reset.

**Warning!** Upon the completion of retrieving sensor ID numbers from ECU, entering the new sensor ID information, the selected vehicle make, model and year will not allowed to be changed.



This button is used to determine the mode you wish to save.



This button allows you to review sensor data you have retrieved and entered. The record will not be stored until a “confirm” bracket is clicked.



This button helps you to track and record the correct TPM sensor location when rotating or changing tires.



This button allows you to select the sensor set information previously stored. When you are too busy to remember the information stored few months ago, this is the handy function for you to review the sensor information

If you wish to delete the information has been stored, click **Reset** under the “Load old set” menu will allows you to clear the memory and start over. You can also use this button in case there’s any wrong data entered during the process.

**Warning!** Data will be cleared once **Reset** is

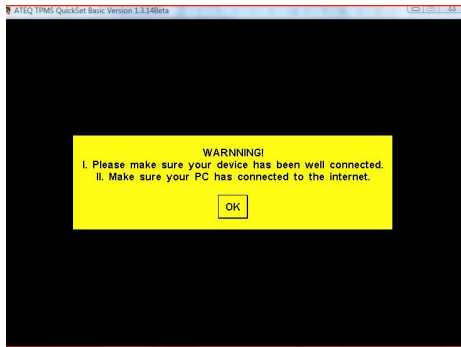
pressed.



Power OFF button: At any time you want to close the program, please click on the green button to end the operation.

---

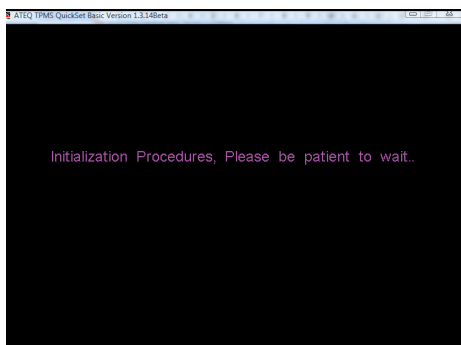
## 9. SOFTWARE UPDATE



1. The first message you will see on your display screen is below.

Click on OK when all connections have been confirmed.

If this message does not appear after more than 2 minutes from launching the program, check that the previous steps have been completed.



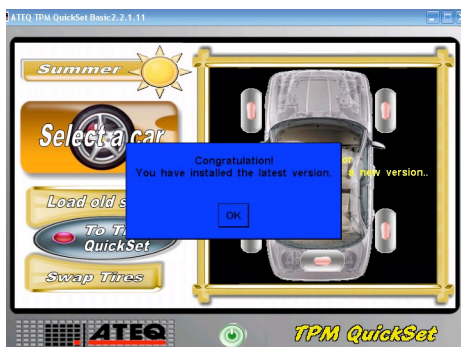
2. The computer will begin the initialization of the setup for the TPM QuickSet PC program.

If this message does not appear, please ensure the device is firmly connected.

If it does not appear after several minutes, close and launch the program again. Make sure the internet is connected.



3. The TPM QuickSet program will connect to internet to check if there is any new update available. ATEQ provides real-time software update service for newer model applications when they are available.



4. The Congratulation message informs that you have installed the latest program version from Internet.  
Click on OK to continue.



5. If your software version is not up to date, you have the choice to update the QuickSet device. By clicking “OK” you will launch the update process. This will close the TPM QuickSet program and will launch the TPM QuickSet Update tool. By clicking “Ignore” you will prevent the TPM QuickSet program from launching the Update tool.



6. During the update process, the progression bar shows the amount of data has downloaded to your TPM QuickSet. This window will be closed automatically to continue the installation of the new update.

**Warning!**

**Do not disconnect the device from PC while installing is in process.**



7. At any time, you can check the latest version of software and TPMQuickSet module firmware installed on your computer. Click the “Update” button on the top right hand side of the screen, software version status window could be seen as image shows on the left. Red icon(s) next to the version number stands for the latest software version is not installed. You can launch the update process by clicking “Update” button in the version window.

## 10. RETRIEVE SENSOR INFORMATION FROM ECU

### 10.1 SELECT A CAR



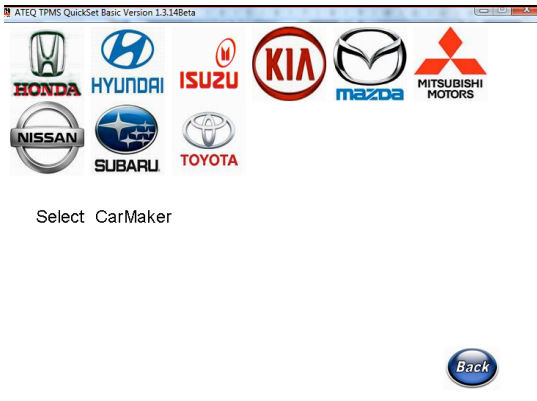
1. At this point, you are ready to select your car. Click “Select a Car” to continue.

If you do not see this screen, please close the program and start over.



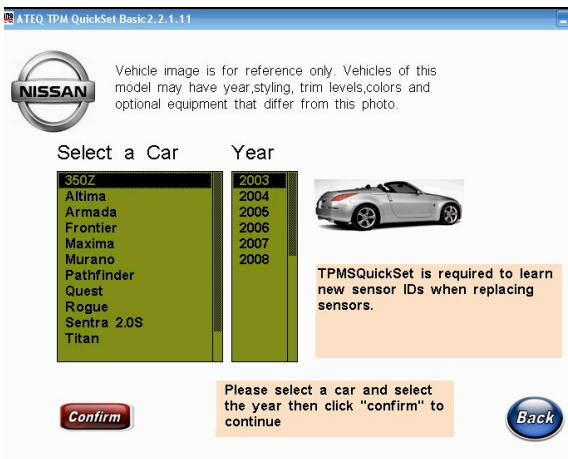
2. If you have more than one car (up to 4) for you and /or your family members, you can still use the same TPM QuickSet for all your cars! You can select a new car model and give it a name by clicking the “Type name” zone, then click ”Select a car” to continue the car model selection.

**Note :** you can switch from a car to another by clicking the car selection button (see step1)



3. Click the proper icon to select car manufacturer.

If you do not find the brand you wish to select, please contact us by emailing to [tpms@atequsa.com](mailto:tpms@atequsa.com).

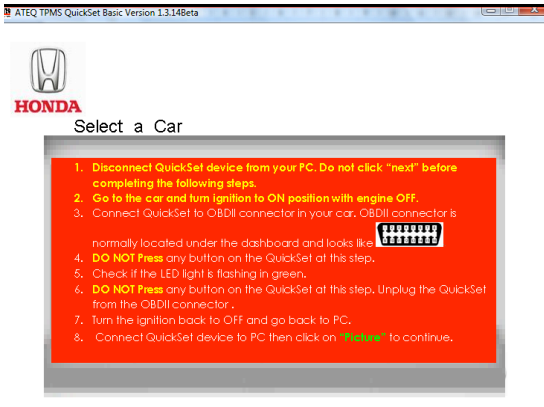


4. Select the model and year from drop-down list then click **Confirm** to advance to the next step.

To cancel the selected model, click on **Back** and start over.



## 10.2 ATTACH QUICKSET DEVICE TO OBDII PORT



1. Upon the completion of step 10.1 an instructional message will be shown as left. Please disconnect the TPM QuickSet device from your PC and read the instruction carefully.

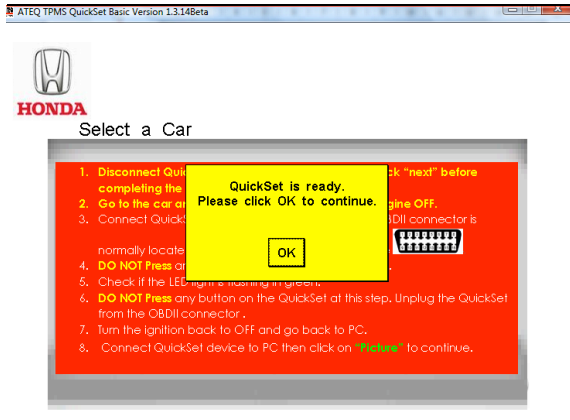
**Warning!** The TPM QuickSet device **MUST** be disconnected from PC at this step. Fail to do so might cause severe damage to the device.

2. You can now unplug the TPM QuickSet device from your USB cable then plug it into your car OBD II connector (Location of OBDII connector varies from model to model. Please refer to your owner manual provided by car manufacturer to find the location).

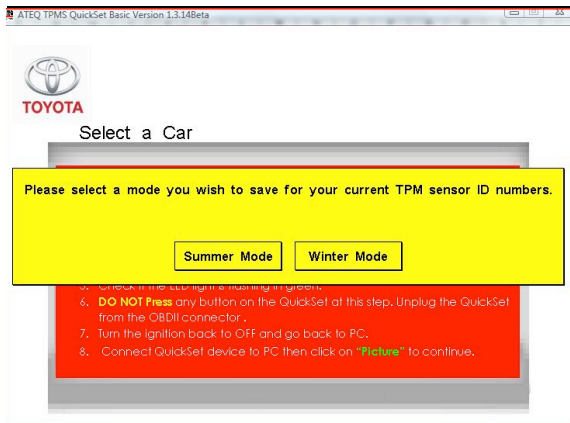
- A flashing green TPM QuickSet LED light confirms the connection is established.
- Press either “snowflake” or “sunny” button on the device to retrieve sensor ID numbers stored in ECU.
- A solid green LED light confirms the communication is completed.
- Wait for 5 seconds and disconnect the TPM QuickSet from OBDII connector and plug it back on your computer.



## 10.3 REVIEW AND SAVE SENSOR ID RETRIEVED FROM ECU



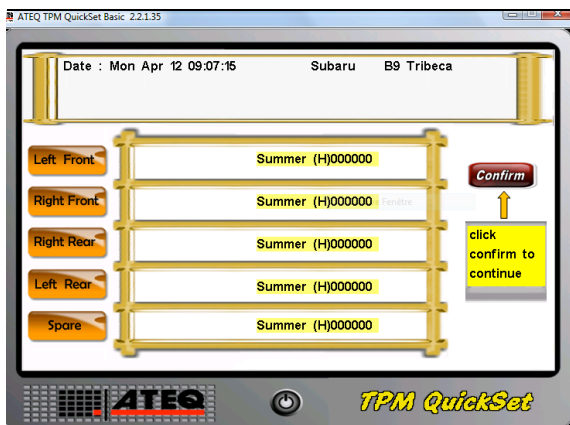
3. As soon as the device is connected to PC again, click **OK** to continue.



4. Select the “Summer mode” or “Winter mode” to save the TPM sensor data retrieved from the vehicle ECU.

### Warning!

If there’s already a TPMS malfunction of your vehicle, for instance the TPMS Warning light is flashing, the data you just retrieved may be incorrect.



5. This window indicates the sensors ID retrieved from car ECU. Sensor ID numbers retrieved from ECU are normally in the format of hexadecimal, 0 (zero) to 9 and A to F.

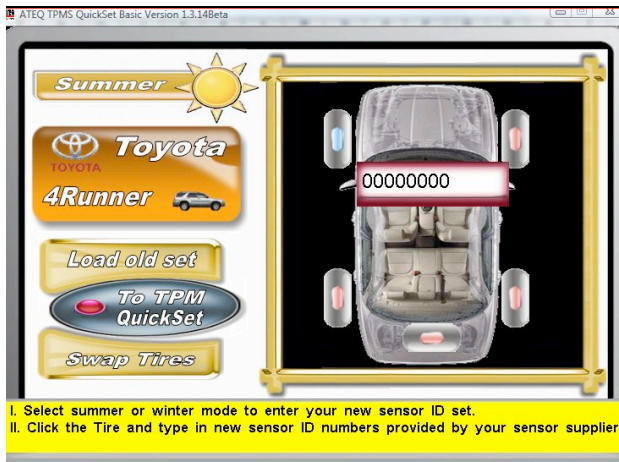
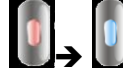
### Warning!

It is recommended to record the sensor ID numbers by putting down on a paper, taking a screen shot or other storage medias in case an unexpected system shutdown or operation error causes missing of the data .

## 11. ENTER AND SAVE NEW SENSOR ID INFORMATION



1. Click on the tire to enter NEW ID number(s) provided by your sensor supplier. Color of tire icon changes from red to blue confirms the sensor ID number is stored.



2. Repeat step 1 for the rest 3 or 4 tires.




3. In some cases, a pop up will ask you to choose from “HEXA” or “DECIMAL” mode. This occurs when TPMQuickSet program could not determine automatically if the ID you have entered is in hexadecimal (digits 0 (zero) to 9 and A to F) or Decimal (digits from 0 to 9 only).

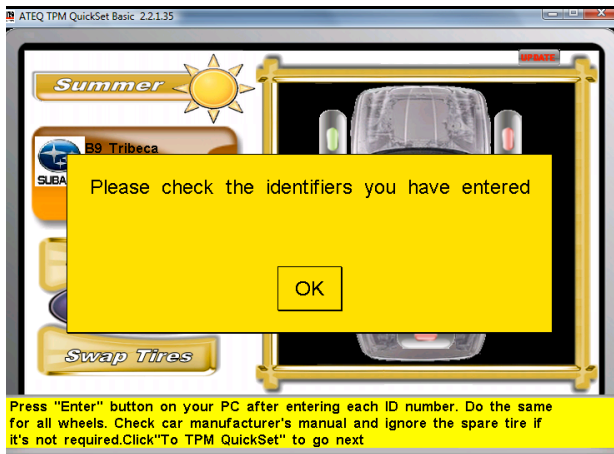
If you have any concern about the sensor ID format, please contact your sensor supplier or email to [tpms@atequsa.com](mailto:tpms@atequsa.com) for tech support.



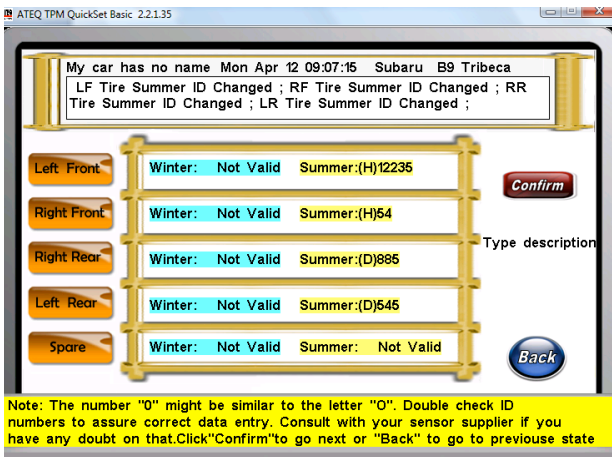
- At any time on this screen you can change the data format between “HEXA” and “DECIMAL” by clicking on the corresponding tire.



- Upon the completion of entering 4 or 5 new sensor ID information, click  to save the information to the device.



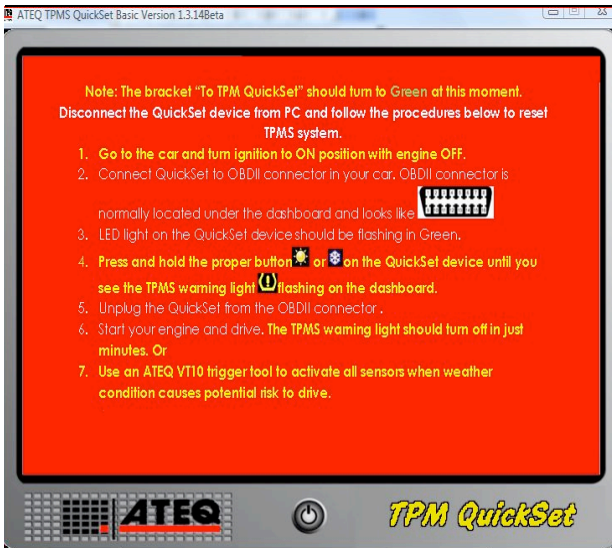
- A pop-up message reminds you to check the sensor ID(s) when an invalid value is detected. Click “OK” to go back to Step 1.



7. Check the data carefully then click “confirm” to continue.

**NOTE:**

If a wrong data entry is found after clicking the “Confirm” bracket, please click “Load old set” bracket then click “Reset” bracket to erase ALL stored sensor information for the vehicle that is already selected. For more detail information, please refer to **12. LOAD OLD CONFIGURATION AND RESET.**

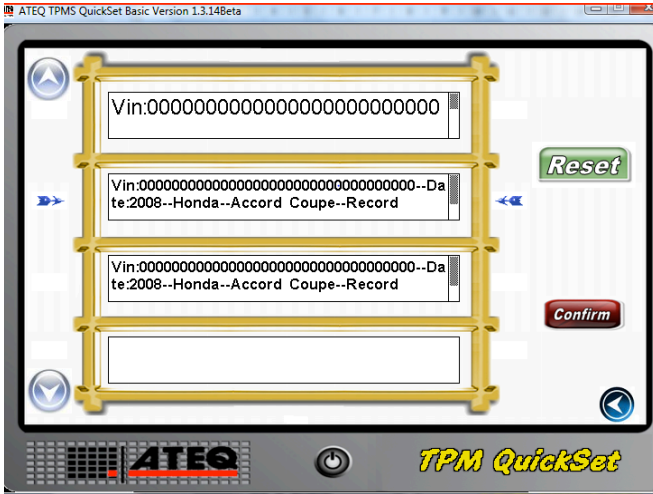


8. This screen confirms the data has been stored successfully. Read carefully and follow the instruction displayed to complete the TPMS reprogram procedure.




**Warning!**

**The make, model and year you have selected will not be allowed to change when seeing this screen at this step.**

## 12. LOAD OLD CONFIGURATION AND RESET



This screen shows all the information stored in the device.

- Click  to go back to previous page.
- Click  to erase the data.
- Click  allows you to load the data you wish to use.

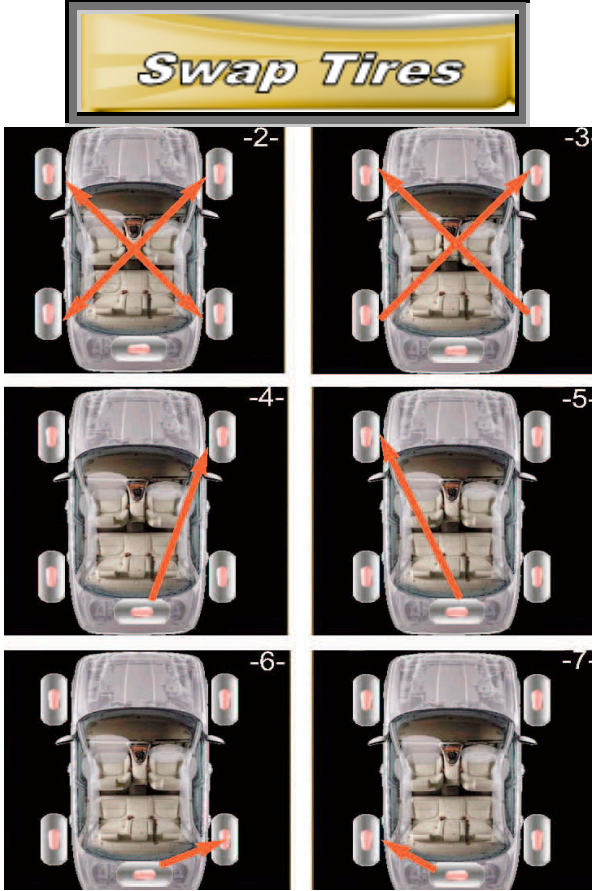
**NOTE:**

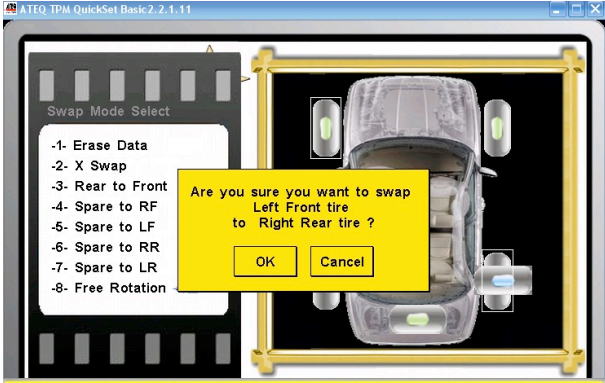
The device could hold up to 4 sets of sensor information.

### 13. TRACK SENSOR INFO WHEN ROTATING TIRES

The locations of sensor information could be switched to designated position by clicking the corresponding button under the “Swap Tires” menu. The information will not be changed or stored until you go back to “To TPM Quickset” and click “Confirm.”

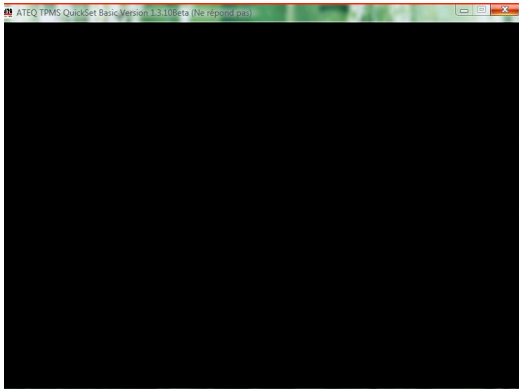
#	Option explanations
2	X-Swap your 4 wheels.
3	Change the rear tires to front.
4	Change the spare tire to Right Front (The previous Right Front sensor information will be erased.)
5	Change the spare tire to Left Front (The previous Left Front sensor information will be erased.)
6	Change the spare tire to Right Rear (The previous Right Rear sensor information will be erased.)
7	Change the spare tire to Left Rear (The previous Left Rear sensor information will be erased.)
8	Free rotation: Switch locations by moving the mouse.
	A message reminder allows you to cancel or confirm the change.



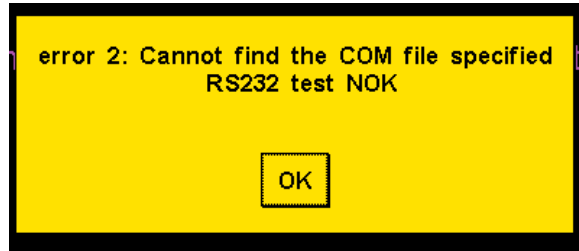


Left-click car's any tire, then the mouse leave the tire, there will be a new tire. Drag the mouse (the new tire moving with the mouse) to car's another tire, then left-click the tire (it will pop up a dialog-box) to swap

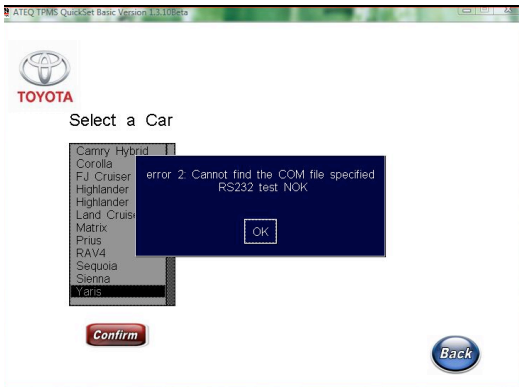
## 14. TROUBLESHOOTING



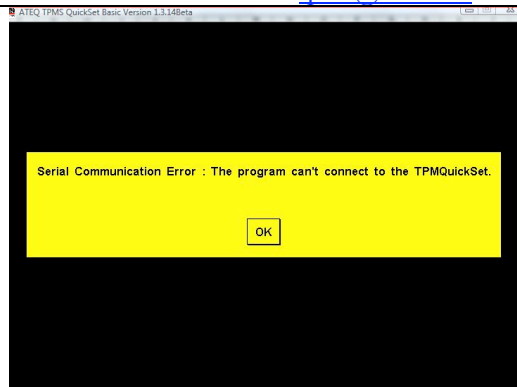
❶ If there's a black screen during the process, please close the program and start over.



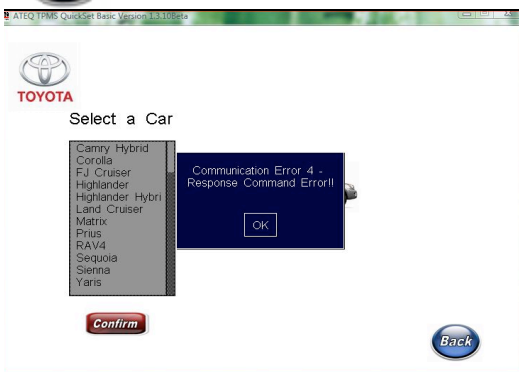
❷ This error appears when there's a communication error detected. For safety reasons, you should close the program, unplug and reconnect the USB cable and restart the program. If this error message keeps happening, please remove and reinstall the software or email to [tpms@usa.com](mailto:tpms@usa.com) for tech support.



❸ To get out from this error screen, just press



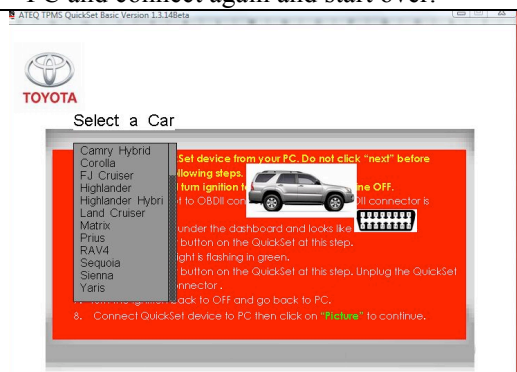
❹ A communication error is happening. Please click "OK" to close the program. Disconnect the TPM QuickSet device from PC and connect again and start over.



❺ To get out from this error screen, just click



on



❻ If the screen is frozen, please close the program and start over.



## 15. CUSTOMER /AFTER SALES SERVICE

---

Product information and brochure are available on the website <http://www.ateq.com/ATEQ>  
If any error occurs, please see [Troubleshooting](#) page or [Contact](#) our engineers for further assistance.

**Most of the failures are due to communication errors:**

- ⇒ 1. USB Driver was not installed.
- ⇒ 2. COM port is occupied.
- ⇒ Action:
  - 1. Remove and reinstall the software driver.
  - 2. Disconnect all devices from PC and restart your computer.

If the given information provided in our website does not resolve the issues, please email to [tpms@atequsa.com](mailto:tpms@atequsa.com) for further assistance.


ATEQ Group provides multi language tech support. Please simply email to [tpms@atequsa.com](mailto:tpms@atequsa.com).  
One of our sales engineers will be contacting you in a timely fashioned manner.

## 16. WARNINGS

---

- Do not use this product near water
- Set the parking brake and block the wheels before testing or repairing a vehicle.
- Remark: block the wheels on front-wheel drive vehicles because the parking brake does not hold the drive wheels.
- Do not drive the vehicle and operate the tester in the same time. Any distractions may cause an accident.
- Refer to the service manual for the vehicle being serviced and adhere to all diagnostic procedures and precautions. Failure to do so could result in personal injury or otherwise unneeded repair.
- Do not activate the TPMS box more than 5 minutes before launching the complete set-up.
- **Do not forget to activate the handbrake before any manipulation, and turn on the key on accessories mode only.**

## 17. COMPANY CERTIFICATION



**BUREAU VERITAS**  
Certification

Certification  
Awarded to

**ATEQ, ATEQ FRANCE and ATEQ UK**  
15 rue des Dames – Zone industrielle des Dames – 78340 LES CLAYES-SOUS-BOIS  
Et les sites listés en annexe  
FRANCE  
71 Herring road – Washford industrial Estate – REDDITCH-WORKS B98 OEA  
GREAT-BRITAIN

Bureau Veritas Certification certify that the Quality Management System of the above organisation has been audited and found to be in accordance with the requirements of the management system standards detailed below

Standards

---

**NF EN ISO 9001 : 2000**

Scope of supply

---

**DEVELOPMENT, DESIGN, MANUFACTURING, MARKETING, SERVICING AND CALIBRATION OF INDUSTRIAL TESTING EQUIPMENT.**

**DEVELOPPEMENT, CONCEPTION, REALISATION, COMMERCIALISATION, MAINTENANCE ET ETALONNAGE D'EQUIPEMENTS DE CONTROLE POUR L'INDUSTRIE**

Original Approval Date: **10<sup>th</sup> December 2004**

Subject to the continued satisfactory operation of the organisation's Management System, this certificate is valid until : **10<sup>th</sup> December 2010**  
To check this certificate validity please call : + 33(0) 4 78 66 82 60  
Further clarifications regarding the scope of this certificate and the applicability of the management system requirements may be obtained by consulting the organisation.

Date: 20<sup>th</sup> February 2008  
File Number: 1.766.865

Romain PETIT  
Chief Executive Officer

*Signature*  




**cofrac**  
CERTIFICATION  
D'ENTREPRISES  
& DE PERSONNELS  
Fondation 1901  
The system audits  
Management systems  
ISO 9001/14001  
Series

MANAGING OFFICE ADDRESS: Bureau Veritas Certification France – 82, avenue du Général de Gaulle – 92046 Paris – La Défense  
ISSUING OFFICE ADDRESS: Bureau Veritas Certification France – 41, chemin des Peupliers – BP 58 – 88073 Coeurly Cedex